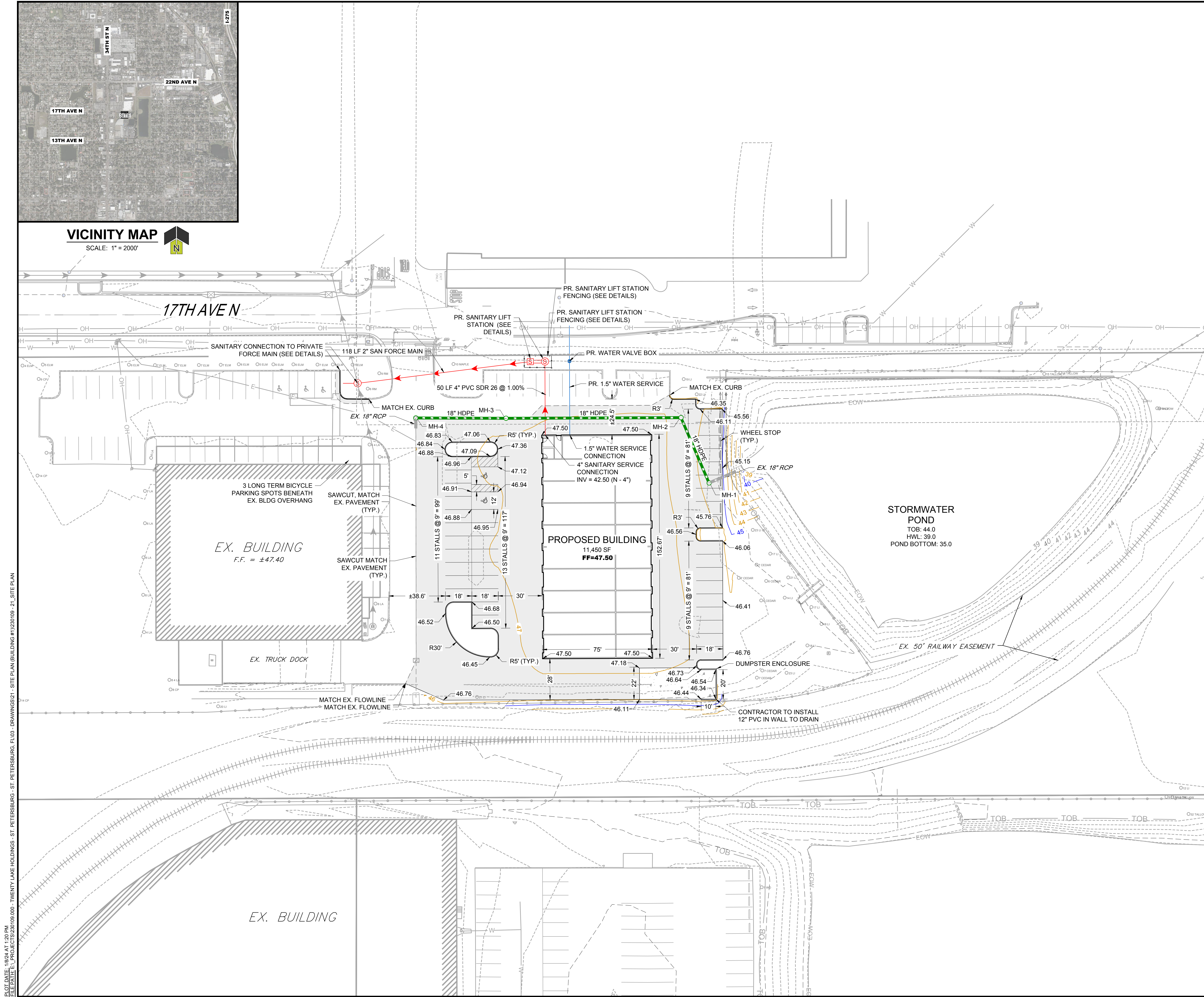


VICINITY MAP
SCALE: 1" = 2000'



LEGEND

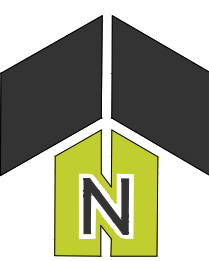
- EX. WATER MAIN
- EX. SANITARY SEWER
- EX. OVERHEAD ELECTRIC
- EX. ELECTRIC LINE
- EX. UNDERGROUND TELEPHONE LINE
- EX. STORM PIPE
- EX. SANITARY MANHOLE
- EX. WATER VALVE
- EX. FIRE HYDRANT
- EX. WATER MANHOLE
- EX. STORM MANHOLE
- EX. BOLLARD
- EX. POWER POLE
- EX. LIGHT POLE
- EX. MAJOR CONTOUR
- EX. MINOR CONTOUR
- SPOT ELEVATION
- PR. MAJOR CONTOUR
- PR. MINOR CONTOUR
- DRAINAGE FLOW ARROW
- PR. WATER MAIN
- PR. WATER SERVICE LINE
- PR. WATER METER
- PR. FIRE HYDRANT
- PR. SANITARY SEWER
- PR. SANITARY SEWER SERVICE
- PR. SANITARY SEWER MANHOLE
- PR. STORM PIPE
- PR. STORM INLET
- PR. STORM MANHOLE
- PR. ROOF DRAIN
- PR. FLARED END SECTION
- PR. WATER METER
- PARKING COUNT
- PAINTED SYMBOLS
- PROPOSED HEAVY DUTY ASPHALT
- PROPOSED CONCRETE PAVEMENT

EXISTING CONDITIONS NOTES:

- TOPOGRAPHIC SURVEY COMPLETED BY MRIC SPATIAL ON WITH LAST FIELD DATA ACQUIRED ON NOVEMBER 15, 2023.
- THE UNDERGROUND UTILITY INFORMATION SHOWN HAS BEEN DERIVED FROM MULTIPLE SOURCES INCLUDING, BUT NOT LIMITED TO, TOPOGRAPHIC SURVEY AND THE LOCAL MUNICIPALITY/DISTRICT. THE ACCURACY AND COMPLETENESS OF THIS INFORMATION CANNOT BE GUARANTEED AND THE CONTRACTOR SHALL CONFIRM UNDERGROUND UTILITY LOCATIONS PRIOR TO CONSTRUCTION.

DEMOLITION NOTES:

- PRIOR TO CONSTRUCTION, THE CONTRACTOR SHALL CONTACT AND COORDINATE WITH THE RESPECTIVE UTILITY COMPANIES FOR ANY REMOVAL AND/OR RELOCATION OF UTILITIES SHOWN ON THESE PLANS.
- SHOULD THE DEMOLITION/CONSTRUCTION ACTIVITIES DAMAGE ANY SITE FEATURES NOT INDICATED FOR REMOVAL, THE CONTRACTOR SHALL REPLACE AND/OR RESTORE THE DAMAGED FEATURES TO THEIR ORIGINAL CONDITION AT NO ADDITIONAL COST.
- ALL EROSION AND SEDIMENT CONTROL BMPs SHALL BE INSTALLED PRIOR TO ANY DEMOLITION ACTIVITIES.
- REMOVE ALL SURFACE IMPROVEMENTS WITHIN DEMOLITION LIMITS UNLESS OTHERWISE NOTED.



Always call 811 two full business days before you dig to have underground utilities located and marked.
Sunshine811.com

TWENTY LAKE MANAGEMENT, LLC
ST. PETERSBURG INDUSTRIAL DEVELOPMENT

SITE PLAN - NORTH

3131 13TH AVENUE N
ST. PETERSBURG, FL 33713

PRELIMINARY
THIS DRAWING HAS NOT BEEN APPROVED BY GOVERNING AGENCIES AND IS SUBJECT TO CHANGE

PROJ NO: 230109
ENG: DJR
DATE: DEC 2023

SHEET NUMBER

C1.0